



# TEXAS

The University of Texas at Austin  
Steve Hicks School of Social Work

## INTERESTED IN HOSTING A **SOCIAL WORK INTERN?**

FIELD INSTRUCTOR

### **QUALIFICATIONS**

#### **BSW Field Instructors**

**BSW Field Instructors** must have either a bachelor's degree in social work and at least two years of work experience since earning that degree, or a master's degree in social work.

480  
Internship  
Hours

#### **MSSW Field Instructors**

**MSSW Field Instructors** must have a master's degree in social work and at least two years of work experience since earning that degree.

540  
Internship  
Hours



### **Our Field Instructors...**

**Supervise** interns individually for at least one hour each week

**Assist** student interns in meeting their educational goals

**Learn** from and network at professional development trainings

**Prepare** for and attend evaluation meetings with your students and faculty liaisons

**Create** an educational environment that allows interns to play key roles in your setting

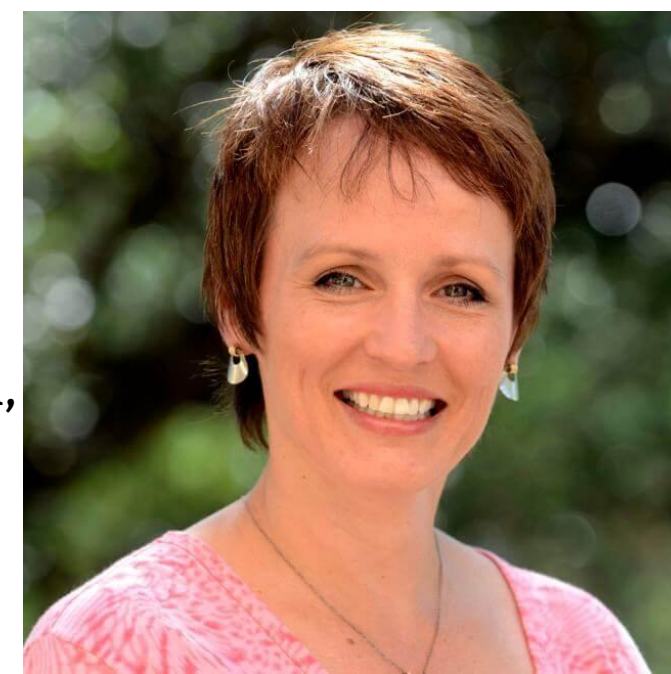
**TO GET STARTED ON BECOMING A UTSHSSW FIELD INSTRUCTOR VISIT:  
[HTTPS://WWW.MYINTERFASE.COM/UTSSW-FIELD/EMPLOYER/](https://www.myinterfase.com/utssw-field/employer/)**

## FIELD INSTRUCTOR

# BENEFITS

- Additional intern support allows you to provide additional services
- **FREE CEUS** for supervising interns
- **FREE CEUS** via online trainings
- **FREE CEUs** and professional connections at Field Instructor Workshops twice each year
- Support from a clinical faculty liaison
- The chance to share your practice wisdom
- Updates on the latest in social work theory and research
- A mutually beneficial partnership with The University of Texas at Austin
- A fresh perspective from a tech-savvy student eager to learn and contribute

**Tanya Voss**  
Assistant Dean for Field Education,  
Clinical Professor



**Eden Blesener**  
Field Education Associate



## Intern capabilities include:

- Counseling veterans with PTSD
- Arranging needed care for older adults
- Helping individuals and families overcome grief and loss
- Researching the effects of substance use on emergency room visits
- Analyzing policy that affects children and families
- Counseling individuals who have survived sexual assault or domestic violence
- Facilitating anti-racism groups for youth in school settings



## Internships located in:

- Austin, Texas
- Australia
- Mexico
- New Zealand
- South Africa
- Switzerland
- Washington, D.C.



**TO GET STARTED ON BECOMING A UTSHSSW FIELD INSTRUCTOR VISIT:  
[HTTPS://WWW.MYINTERFASE.COM/UTSSW-FIELD/EMPLOYER/](https://www.myinterfase.com/utssw-field/employer/)**